



International Journal of Environment and Climate Change

Volume 13, Issue 9, Page 1424-1431, 2023; Article no.IJECC.102992

ISSN: 2581-8627

(Past name: British Journal of Environment & Climate Change, Past ISSN: 2231-4784)

Morpho-Molecular Characterization and Seasonality analysis of *Greenidea psidii* Van Der Goot on Guava in Terai Zone of West Bengal, India

**Atanu Maji ^{a*}, Shyamal Kumar Sahoo ^a, Victor Phani ^b
and Swagata Bhowmik ^a**

^a Department of Entomology, Uttar Banga Krishi Viswavidyalaya, Pundibari, Cooch Behar-736165,
West Bengal, India.

^b Colleges of Agriculture, Uttar Banga Krishi Viswavidyalaya, Majhian, Balurghat-733133,
West Bengal, India.

Authors' contributions

This work was carried out in collaboration among all authors. All authors read and approved the final manuscript.

Article Information

DOI: 10.9734/IJECC/2023/v13i92372

Open Peer Review History:

This journal follows the Advanced Open Peer Review policy. Identity of the Reviewers, Editor(s) and additional Reviewers, peer review comments, different versions of the manuscript, comments of the editors, etc are available here: <https://www.sdiarticle5.com/review-history/102992>

Original Research Article

Received: 26/05/2023

Accepted: 14/07/2023

Published: 19/07/2023

ABSTRACT

Greenidea psidii, Guava aphid comes under the subfamily Greenideinae within the Aphididae and was first discovered in the World in 1916 on guava. In terai region of West Bengal these species are regarded as potential pest of guava (*Psidium guajava*). Therefore, quick and precise species identification is immediately needed for early detection and risk analysis followed by integrated management of the aphid pests. During morpho- taxonomy study we found that apterous aphids

*Corresponding author: E-mail: amaji4451@gmail.com;

have long sized siphunculi, alongwith long setae present on the body. Moreover, the identity of the aphid species was confirmed through DNA barcoding of the mitochondrial cytochrome c oxidase sub unit I (COX-I) gene, another analytical tool for quick and precise identification. The COX-I sequence was successfully blasted for similarity search and uploaded in NCBI software (Accession No. OR085959). Maximum likelihood method for phylogenetic analysis reveals that all the *G. psidii* sequences were clustered in the same clade and confirmed the identity of the species of the present study. The seasonal fluctuation studies reveals that the maximum population of 21.85 aphids/ twigs and 17.45 aphids/ twigs were observed on 10th SW during 2021 and on 11th SW during 2022, respectively.

Keywords: *Guava aphid; identification; terai region; seasonal incidence; greenidea psidii.*

1. INTRODUCTION

Guava (*Psidium guajava* L; Myrtaceae) is one of the most vital commercial fruit crops in India. It is the fourth most valuable fruit after mango, banana and citrus. The production of guava affected by different insect pest. Among them, aphids are one of most important pests in India. Aphids are important phloem-feeding insect group of hemipterans, which comprises around 5000 species within three families, Adelgidae, Phylloxeridae and Aphididae (24 subfamilies). In addition, many species are serious pests for agriculture and forestry. Consequently, aphids have been considered superior model organisms for environmental and evolutionary studies [1].

Greenidea psidii van der Goot comes under the subfamily Greenideinae within the Aphididae and includes approximately 45 species [2]. *Greenidea psidii* was first discovered in the World in 1916 on guava and its comparative, *Psidium cattleianum* Sabine in Brazil [3]. In terai region of West Bengal these species are regarded as potential pests. *Greenidea psidii* are highly polyphagous in nature and mainly distributed from east to west Himalayas [4]. Identification of the aphid specimens up to species level is needed to establish the diversity of the species, phylogenetic patterns and the evolutionary relationships [5] as well as finally it helps for the management of the pests through sustainable way. Morphological identification of aphids is usually done based on different morpho-taxonomic keys. DNA barcoding is an analytic method for species identification. It aids in the identification of species in functional settings, the detection of morphologically cryptic species and the revealing of host-specific lineages [6]. DNA barcoding has been used in a various range of taxa, including aphids [7,8,9]. In this study, we test the effectiveness of DNA barcoding for species identification in Greenideinae. The standard molecular barcode, cytochrome c

oxidase subunit I (COX I) was used for this subfamily.

The learning of association between aphids and its environment provides necessary information for interpreting spatial dynamics, scheming efficient sampling programmes for population judgment and helps in area wise pest management and the development of population models [10]. The objective of the present study was to determine the aphid species of guava (*Psidium guajava*) in the Terai region of West Bengal, India through morpho-molecular characterization and their seasonality analysis, which aid in the development of appropriate management strategies timely.

2. MATERIALS AND METHODS

2.1 Sampling and Specimen Collection

The aphid specimen was collected from the Guava orchard of Horticultural Farm, Uttar Banga Krishi Viswavidyalaya, Pundibari, West Bengal, India. During collection the aphids along with plant materials like tender leaves and apical twig portion were collected in plastic zipper bag. Afterwards, some aphids were transferred into the small vials containing 70% ethanol with a corresponding level and brought to the laboratory for taxonomic studies. The data on host plants, locality (GPS), date and other relevant information were noted.

2.2 Morphological Studies

The collected aphid specimen was identified under a ZEISS (AXIOLAB 5) microscope in the Taxonomy laboratory of Uttar Banga Krishi Viswavidyalaya. Pundibari, West Bengal, India. Four to five apterous individuals of the sample were slide mounted by following the protocol of Brown & De Boise [11]. The taxonomic key of Blackman and Eastop [12,13] was followed for

identification and by comparing with recognized specimens and the innovative morphological descriptions.

2.3 Molecular Identification

The total genomic DNA was extracted from each aphid specimen following non-destructive method [14]. For DNA extraction, DNeasy Blood and Tissue kit (Qiagen, Hilden, Germany) was used following manufacturer's protocol.

The extracted DNA was used for PCR amplification of the cytochrome oxidase subunit I (COI) region using universal forward primer LCO 1490 (5'-GGT CAA CAA ATC ATA AAG ATA TTG G-3') and reverse primer HCO 2198 (5'-TAA ACT TCA GGG TGA CCA AAA AAT CA-3'). The cycling conditions followed for PCR were an initial denaturation step for 5 minutes at 94° C, followed by 30 cycles consisting of 45 Sec at 94° C, annealing for 45 Sec at 47° C and final extension step for 1 minute at 72°C; followed by final extension for 10 minutes at 72°C. The PCR were performed using a C1000™ thermal cycler.

Polymerase chain reaction products were purified using Qiagen PCR purification kit and then directly sequenced. The amplified PCR product was sequenced by outsourcing of sample. The NCBI Blast software [15] was used to find the closest species match for each query. Afterwards the sequence was uploaded in NCBI Gen Bank to get the accession number.

2.4 Seasonality Study

The seasonal incidence data of aphid was recorded at weekly interval basis in the Guava orchard of Horticultural Farm, Uttar Banga Krishi Viswavidyalaya, Pundibari, West Bengal, India in the year of 2021-2022. Aphid population was counted from five tender twigs of the randomly selected 20 guava plants. Meteorological data on temperature, relative humidity and rainfall for the

period of experimentation were collected from the Meteorological Observatory Unit of the University located approximately at 300-meter distance from the guava orchard. Correlation and regression analysis was studied between the aphid population and weather parameters to find out the impact of weather on the aphid dynamics.

3. RESULTS AND DISCUSSION

3.1 Morpho Taxonomy

The collected apterous aphid specimen was identified as *Greenidea psidii* with the taxonomic key of Blackman and Eastop [12,13]. The aphids were reddish brown in colour and had long siphunculi covered with numerous long hairs. Siphunculi were dark brown in colour, apex and base portion were much darker as compared to middle portion but these were less dark as compared to dorsal abdominal sclerotization. The base portion of siphunculi had reticulation and abdominal sclerotization also found. The cauda was helmet shape with so many hairs. Head structure was undeveloped with no presence of spicules and rhinaria found on the antennae 3rd segment. It was observed that *G. psidii* was one of the fast-moving aphid species as compared to the other species. Therefore, *G. psidii* can be distinguished easily from other aphid species based on this morphological character.

Greenidea psidii has been reported in India, Bangladesh, Nepal, China, Taiwan, Japan, Indonesia, Philippines, Costa Rica and California [16,17,18,19].

3.2 Molecular Taxonomy

The COX-I sequence of the aphid specimen was successfully uploaded in NCBI software. The sequence showed more than 99% similarity or identity with the available reference sequences (Table-1) after running through BLAST and identified the species as *Greenidea psidii*.



Reddish brown in colour in live condition.

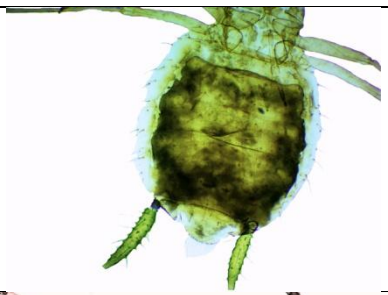
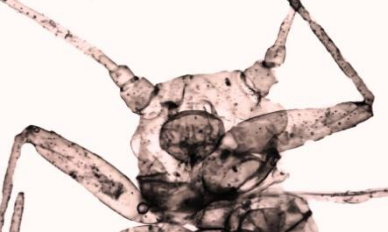

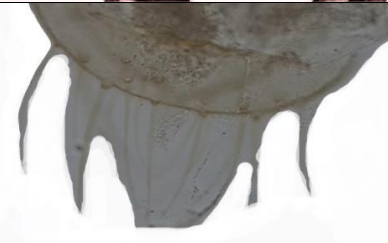
	<p>Siphunculi not dark as compared to dorsal abdominal sclerotization. Numerous spine like hairs present on the whole body.</p>
	<p>Head structure undeveloped.</p>
	<p>Rhinaria found on antennae 3rd segment.</p>
	<p>Cauda helmet shape and numerous hair present.</p>

Fig. 1. Different morphological character of *Greenidea psidii*

Table 1. Top five similar nucleotide sequence of *Greenidea psidii* through NCBI Blast search

Hits (Accession No)	E value	Query C	% Identity	Country of Origin
<i>G. psidii</i> isolate GP22_F (MH407722)	0.0	100	99.18	Costa Rica
<i>G. psidii</i> voucher NZMC_aphid 26617 (NC_041198)	0.0	100	99.18	China
<i>G. psidii</i> voucher DB_001_AZ (OP562907)	0.0	100	99.18	Chile, Africa
<i>G. psidii</i> voucher ZMIOZ 22299 (OL619520)	0.0	100	99.18	China
<i>G. psidii</i> voucher ZMIOZ 26617 (OL619497)	0.0	100	99.18	China

Sequence Confirmation Details:

Species Name	Common Name	Host	Accession Number (NCBI)
<i>Greenidea psidii</i>	Guava Aphid	<i>Pisidium guajava</i>	OR085959

Phylogeny Analysis: A phylogeny tree was constructed by using the maximum likelihood method reveals that all the sequence is closely related with each other and clustered into a same clade. Hence the identity of the individual species could be validated.

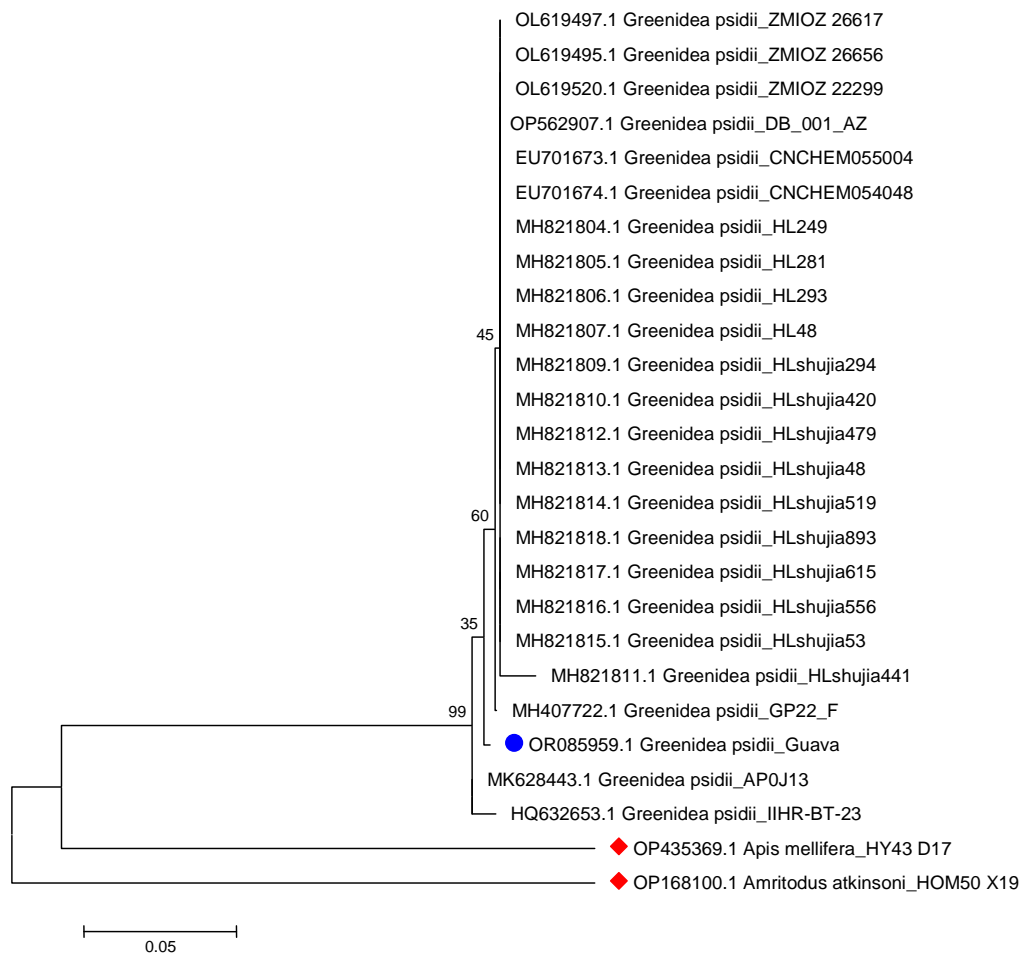


Fig. 2. Molecular phylogenetic analysis of *Greenidea psidii* by maximum likelihood method (Tamura 3 parameter distances) using 24 partial cytochrome c oxidase subunit I sequences of *Greenidea psidii* and 2 out groups (Red mark)

3.3 Seasonal Incidence

The Guava aphid, *Greenidea psidii* was noted to be one of the most important insect pests of guava plant in northern Bengal. The infestation of *Greenidea psidii* on guava started from 4th SW in both the year 2021 and 2022. Maximum population of 21.85 aphids/ tender twigs and 17.45 aphids/ tender twigs cm was observed on 10th SW during 2021 and on 11th SW during 2022, respectively (Fig. 3 and 4). Thereafter gradual decline in the population of aphid was evident and the population were become zero. Then again, the population occurs on 43rd SW and 46th SW during 2021 and 2022 and again the

population decline thereafter. Severity of aphid incidence was higher in the first year as compared to the second year. The abundance of guava aphid population during March, owing to the coincidence of emergence of new shoots after the winter months, which is in line with the observation of Salas et al. (2011). There was no aphid population in guava plant from May onwards presumably due to maturity of the leaves and decline of the nutritional content in the food materials.

Aphid population was negatively correlated with maximum temperature and minimum temperature, maximum relative humidity,

minimum relative humidity and with rainfall in both the year 2021 and 2022. While with bright sunshine hours it showed positive correlation in both the year. This study reveals that high temperature and rainfall had detrimental role on the guava aphid population. So, it may be proclaimed that life cycle of *G. psidii* is adapted to complete before the onset of summer and rainy season to avoid the high temperature and rainfall.

The multiple regression analysis of the aphid population with weather parameters has been worked out and the results have been presented in Table 3. Inspection of the results bare that the abiotic parameters had significant influence on the population fluctuation of aphid during both the years and collectively all the abiotic parameters were responsible for 62.5% and 52.7% variation in the aphid population during 2021 and 2022, respectively.

Table 2. Correlation coefficients between guava aphids with weather parameters during 2021-22

Year	Insect	Temperature (°C)		Relative humidity (%)		Rainfall	Sunshine
		Max.	Min.	Max.	Min.		
2021	Aphid	-.058	-.388**	-.505**	-.588**	-.310*	.148
2022	Aphid	-.028	-.294*	-.449**	-.572**	-.245	.303*

** Correlation is significant at the 0.01 level (2-tailed)

* Correlation is significant at the 0.05 level (2-tailed)

Table 3. Multiple regression analysis of aphid with weather parameters

Year	Multiple regression equation	R ²	Adjusted R ²
2021	$Y = 40.258 + .346X_1 + .140X_2 - .052X_3 - .555X_4 + 0.079X_5 - 2.566X_6$	0.625	0.575
2022	$Y = 30.044 + .250X_1 + .217X_2 - .056X_3 - .439X_4 + 0.050X_5 + 1.529X_6$	0.527	0.463

X1= Maximum temperature, X2= Minimum temperature, X3= Maximum relative humidity, X4= Minimum relative humidity, X5= Rainfall, X6= Sunshine Hour

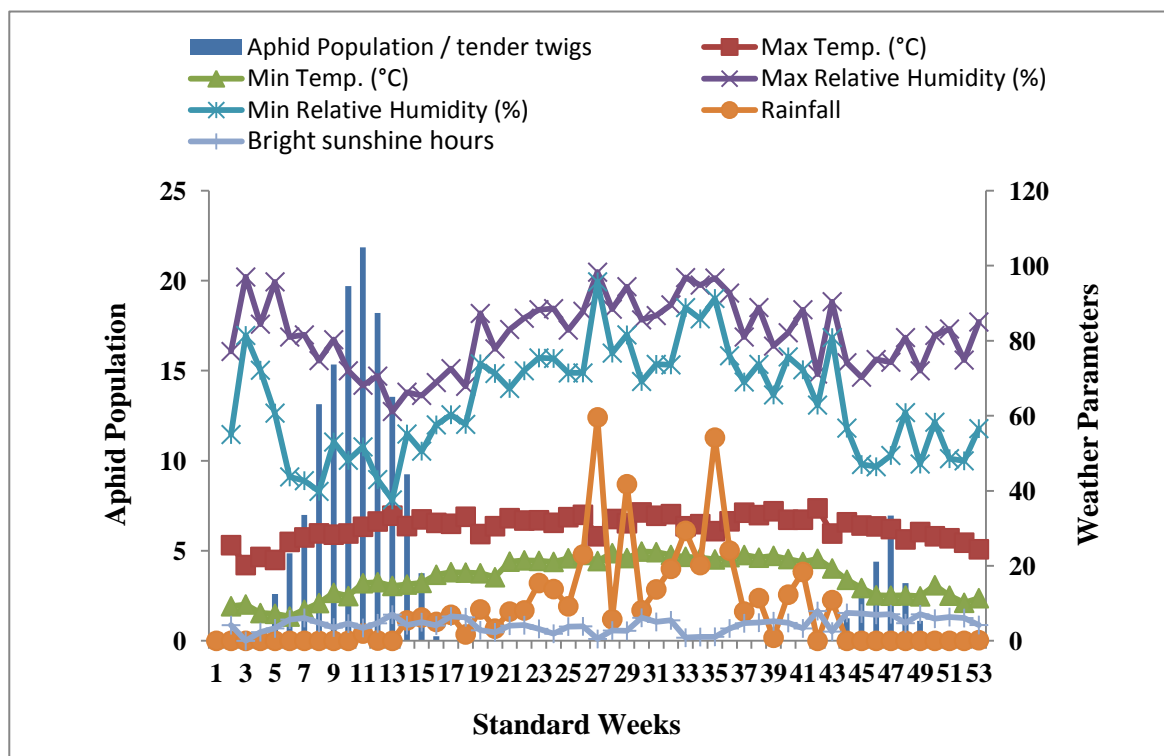


Fig. 3. Incidence pattern of guava aphid in relation to meteorological parameters during 2021

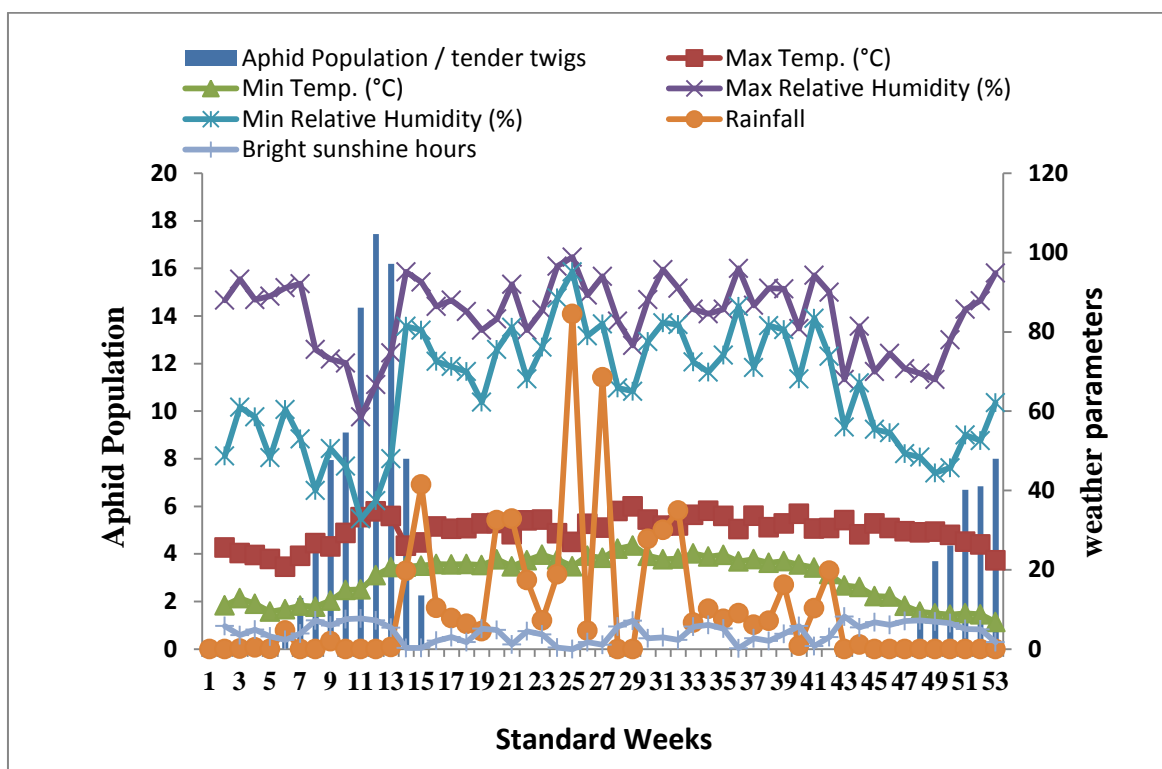


Fig. 4. Incidence pattern of guava aphid in relation to meteorological parameters during 2022

4. CONCLUSION

The knowledge on occurrence and seasonality of *Greenidea psidii* will be helpful to formulate the integrated management schedule. It is also noted that no proper information on seasonality of *Greenidea psidii* was not found in Indian context while literature survey. Therefore, this information on seasonality will be helpful or supportive. Besides further research work is needed to evaluate the natural enemy complex of the aphid species for their conservation and multiplication. The taxonomic as well as molecular characterisation was followed for species identification might assists to recognise the phenotypic plasticity as well as cryptic species.

ACKNOWLEDGEMENT

We are thankful to the Head, Department of Entomology, UBKV, Coochbehar, West Bengal, India for providing necessary facilities for this study. The authors are also grateful to Dr. Deepak Kumar (Department of Biochemistry), College of Agriculture, Uttar Banga Krishi Viswavidyalaya, Majhian, Balurghat, West Bengal for giving his valuable suggestion during the research work.

COMPETING INTERESTS

Authors have declared that no competing interests exist.

REFERENCES

1. Baumann P. Biology of bacteriocytes-associated endosymbionts of plant sap-sucking insects. Annual Revision Microbiology. 2005;59:155-189.
2. Pérez Hidalgo N, Villalobos Muller W, Mierdurante P. *Greenidea psidii* (Hemiptera: Aphididae: Greenideinae) new invasive aphid in Costa Rica. Florida Entomology. 2009;92(2):396-398.
3. Noemberg-lazzari SM, Zonta-de carvalho RC, Cardoso JT, Calado DC. First record of *Greenidea psidii* van der Goot and comparison with *Greenidea ficicola* Takahashi (Hemiptera: Aphididae) in Brazil. Zootaxa. 2006,2009;1235:63-68.
4. Singh G, Singh R. Updated checklist of *Greenideinae* (Aphididae: Hemiptera) and its host plants in India. International Journal of Contemporary Research and Review. 2017;8(3):20191-20219.

5. Platnick NI. The world spider catalog, version 10.0. American Museum of Natural History; 2014.
6. Footitt RG, Lowery DT, Maw HEL, Smirle MJ, Lushai G. Identification, distribution, and molecular characterization of the apple aphids *Aphis pomi* and *Aphis spiraecola* (Hemiptera: Aphididae: Aphidinae). Canadian Entomologist. 2009;141:478–495.
7. Hebert PDN, Cywinska A, Ball SL, Dewaard JR. Biological identifications through DNA barcodes. Proceedings of Biological Sciences. 2003;270:313–321.
8. Chen R, Jiang LY, Qiao GX. DNA barcoding in rapid identification of aphids on *Pinus armandii*. Chinese Journal of Applied Entomology. 2013;50:50–60.
9. Wang Z, Jing RY, Qiao GX. Rapid identification of aphids on *Amygdalus* plants using DNA barcoding. Chinese Journal of Applied Entomology. 2013; 50:41–49.
10. Croft BA, Hoyt SC. Integrated management of insect pests of pome and stone fruits. Wiley: New York; 1983.
11. Brown PA, De Boise E. Procedures for the preparation of whole insects as permanent microscope slides and For the Remounting of Deteriorating Aphid Slides. – NatSCA News. 2006;8:15–19.
12. Blackman RL, Eastop VF. Aphids on the World's Trees. An Identification and Information Guide. CAB International; 1994.
13. Blackman RL, Eastop VF. Aphids on the world's crops: an identification and information guide (No. Ed. 2). John Wiley & Sons Ltd; 2000.
14. Rowley DL, Coddington JA, Gates MW, Norrbom AL, Ochoa RA, Vandenberg NJ, Greenstone MH. Vouchering DNA- barcoded specimens: Test of a nondestructive extraction protocol for terrestrial arthropods. Molecular Ecology Notes. 2007;7(6):915–924.
15. Meier R, Kwong S, Vaidya G, Ng PKL. DNA barcoding and taxonomy in Diptera: A tale of high intraspecific variability and low identification success. Systematic Biology. 2006;55:715–728.
16. Beardsley JW. *Greenidea formosana* (Maki), an aphid new to the *Hawaiian islands* (Homoptera: Aphididae: Greenideinae). Proc. Hawaiian Entomol. Soc. 1993;32:157-158.
17. Gill RJ. New State Records: An Aphid. Ca. Plant Pest and Dis. Report. 1998;17: 9.
18. Halbert SE. The genus *Greenidea* (Rhynchota:Aphididae) in the United States. Fla Entomology. 2004;87:159–163.
19. Sugimoto S. A revision of the genus *Greenidea schouteden* in Japan (Homoptera: Aphididae: Greenideinae). Ins. Matsum. n. s. 2008;64:53-79,9 figs.

© 2023 Maji et al.; This is an Open Access article distributed under the terms of the Creative Commons Attribution License (<http://creativecommons.org/licenses/by/4.0>), which permits unrestricted use, distribution, and reproduction in any medium, provided the original work is properly cited.

Peer-review history:

The peer review history for this paper can be accessed here:
<https://www.sdiarticle5.com/review-history/102992>