



Water Quality Assessment of Karnaphuli River of Bangladesh Using CCME-WQI Method

Sanjida Mukut ^a, Md. Mostafizur Rahaman ^b,
Md. Rashedul Azim ^b, Md. Moazzam Hossain ^b
and Mohammad Helal Uddin ^{b*}

^a Department of Chemistry, Faculty of Engineering and Technology, Chittagong University of Engineering and Technology, Chattogram-4349, Bangladesh.

^b Department of Applied Chemistry and Chemical Engineering (ACCE), Laboratory of Applied Chemical Analysis (LACA), Faculty of Science, University of Chittagong, Chattogram-4331, Bangladesh.

Authors' contributions

This work was carried out in collaboration among all authors. All authors read and approved the final manuscript.

Article Information

DOI: 10.9734/AJEE/2023/v20i1429

Open Peer Review History:

This journal follows the Advanced Open Peer Review policy. Identity of the Reviewers, Editor(s) and additional Reviewers, peer review comments, different versions of the manuscript, comments of the editors, etc are available here: <https://www.sdiarticle5.com/review-history/95353>

Original Research Article

Received: 20/10/2022

Accepted: 28/12/2022

Published: 09/01/2023

ABSTRACT

Karnaphuli River is one of the largest recipients of industrial effluent among all the rivers in Bangladesh in the last couple of years. The main purpose of this study is to evaluate the suitability of the river water for irrigation, livestock and other uses and to identify the main pollutants affecting the river during its course through the city. Ten Sampling points along with the Karnaphuli river basin was selected for the WQI assessment. The sampling was conducted for a period of one year from May 2021 to April 2022. Canadian Council of Ministers of the Environment (CCME)-(WQI) Water Quality Index was applied for several water quality parameters namely pH, Total Dissolved Solids (TDS), Dissolved Oxygen (DO), Phosphate, Nitrate, Chloride, Total Hardness, Conductivity,

*Corresponding author: E-mail: mhuddin.acce@cu.ac.bd;

Biological Oxygen Demand (BOD), Cd, Cu, Zn, Pb. Irrigation and livestock indices were analyzed based on Canadian Water Quality Guidelines (CWQGs). The study shows that the river water is mostly alkaline and the pH lies between 6.4 -7.8. The DO value varies from 1.8 to 6 ppm and BOD varies from 1.7 to 3.4 ppm. The concentrations of Cu, Cd, Pb and Zn are Cu- (0.108-0.743 ppm), Cd- (0.073-0.281 ppm), Pb- (0.017-0.699 ppm), Zn- (0.012-0.032 ppm) respectively. Based on the index values, the river water quality has been observed as poor and marginal.

Keywords: Karnaphuli river basin; heavy metals; CCME; DO; BOD; TDS; water quality index.

1. INTRODUCTION

Our survival on planet Earth depends on three basic natural resources - water, air and soil. Of them, water is the most important component as it forms the basic medium for the origin of life. In our daily life water is used for drinking, irrigation and other purposes [1]. The quality of drinking water is a very sensitive issue. The availability of water supply in terms of both quantity and quality is essential to human existence [2]. Water quality is influenced both by natural and anthropogenic intervention where the former includes the local climate, geology etc. and the latter covers the construction works [3].

Rivers are the main inland water resources for domestic, industrial, irrigation and drinking purposes, which receive great amount of anthropogenic, land use and industrial dissolved contaminants from throughout the river basin. Karnaphuli River is the largest and most important river in first growing industrial city and port city Chattogram and Chattogram Hill Tracts (CHT), is a 667m (2188ft) wide river in the southeastern part of Bangladesh [4]. Originating from Lushai Hills in Mizoram province of India, it flows 270Km (170 miles) west through Chattogram and Hill Tracts area into the Bay of Bengal.

The Karnaphuli River is the major source for supplying water to Chattogram though it is contaminated with organic pollutants mainly from domestic and industrial wastes. Liquid waste of the Karnaphuli Paper Mills, Thousands of tonnages of dirt and garbage from Chattogram municipal area and different Mills and Factories are dumped into the Karnaphuli River. There are more than 140 industries in Kalurghat, Patenga, Nasirabaad, Sholoshahar, Kaptai, Bhatiary, Barabkunda, Anowara, and Fauzderhaat in Chattogram. Chattogram has 19 Tanneries, 1 Rayon Mill, 26 Textile Mills, 1 Refinery, 2 Chemical, 1 TSP fertilizer, 5 Fish Processing, 2 Cement Factories, 5 Steel Mills, 2 Insecticide Factories, 4Dyeing Factories and about 75 other small Industries [5]. Most of the industries are

major contributor of toxic chemicals and trace metals in the river [6-8].

The water quality management of the Karnaphuli River is very important for the present and future economy of Bangladesh. Water quality is determined by comparing the physical, chemical and biological characteristics of a water sample with water quality guidelines [9-11].

Water Quality Index (WQI) is a tool to determine the quality of water by using physicochemical parameters of surface water, which can act as an indicator of water pollution [12-14]. WQI provides a single number that expresses overall water quality at a certain location and time, based on several water quality parameters. The objective of water quality index is to turn complex water quality data into information that is understandable and usable by the public [15]. WQI assessment is essential to prevent and control river pollution and to get reliable information on the quality of water for effective management. Different methods used for water quality index estimation, such as "The Canadian Council of Ministers of the Environment Water Quality Index (CCME-WQI), National Sanitation Foundation Water Quality Index (NSFWQI), Oregon Water Quality Index (OWQI) and Weighted Arithmetic Water Quality Index (WAWQI)" [16]. CCMEWQI consists of three variances (Scope, Frequency and Amplitude) that combine to give a value between 0-100 that represents the water quality [17].

The present study aim to use the CCME WQI method for providing a mathematical framework to assess ambient water quality of Karnaphuli River water. It also describes the changes in water quality at the sampling points which are within the Karnaphuli River Basin.

2. MATERIALS AND METHODS

2.1 Sampling Site and Study Area

Karnaphuli River with its tributaries is the largest surface water source for Chattogram and the

Chattogram Hill Tracts region. The river enters into Chattogram city in the south-west directions flows upto 180 Km in the Chattogram region and then flows through Rangamati, Dhulia Chari, Kaptai [18,19]. In the present study samples were collected from main region, transitional region, meandering region to cover the Karnaphuli river basin.

Ten sample points were selected based on catchment characteristics, anthropological activities, land use practices, industrial discharges. Samples were collected in the middle month of three seasons Pre-monsoon (January-March), Monsoon (July-September), Post-Monsoon (October-December) of the hydrological year 2021-2022. A brief picture of study area is given in the Fig. 1. Polyethylene terephthalate bottles were used to collect samples. pH and DO were analyzed by Hanna pH meter and Hanna DO meter (DO-5509) respectively, Turbidity was measured by Lovibond TB 250 turbidity meter, TDS and Electrical Conductivity were measured by a portable conductivity meter (model: HACH-Sension EC5) at the site itself. Winkler method was used to measure BOD₅. Alkalinity, Nitrates, Phosphates, Chlorides, Total Hardness were analyzed in the laboratory as per the standard procedures of APHA [20]. Heavy metals were evaluated by Direct Reading Spectrophotometer (DR-2000). Atomic Adsorption Spectrophotometric method (iCE 3300 AAS) was used to analyze heavy metals (Cu, Cd Pb, and Zn) [21]. Our study area consists of several polluted zones of Karnaphuli River. After the selection of sample points, the water samples were collected from Karnaphuli River to assess the water quality parameters discussed below. The study area is show in Table 1.

2.2 Sample Digestion

For measuring heavy metal contents pre-treatment of samples were carried out by standard methods using APHA [22]. 500 ml of the sample was taken into an evaporating disk, acidified with 5ml HNO₃ and evaporated on a steam bath to 15 to 20 ml. Then transferred to a 125 ml conical flask and 5ml HNO₃, 10 ml H₂SO₄ and few glass beads (to prevent bumping) were added. Then, it was evaporated in hot plate until clear solution was observed. It was again cooled to room temperature and diluted to 50 ml and filtered with a porcelain filter crucible. The residue was washed with small amount of water. Then the filtrate was transferred to a 100 ml

volumetric flask and made up to the mark with distill water. An aliquot of this solution were taken for the determination of the metals [23].

Table 1. Sample locations

Sample point number	Sample point location
S1	Near Sandwip Channel
S2	KAFCO Point
S3	Firingibazar Ghat Point
S4	Majhirghat Point
S5	Chaktai Canal Point
S6	Rajakhali Canal Point
S7	Ispahani Jetty Point
S8	Kalurghat Point (Near BSCIC)
S9	Karnaphuli Paper Mill
S10	Karnaphuli Halda Estuary

2.3 Calculation of CCME-WQI

After the body of water, the period of time, and the variables and objectives have been defined, each of the three factors that make up the index must be calculated. The calculation of F₁ and F₂ is relatively straightforward; F₃ requires some additional steps.

F₁ (Scope) represents the percentage of variables that do not meet their objectives at least once during the time period under consideration ("failed variables"), relative to the total number of variables measured:

$$F_1 = \frac{\text{Number of failed variables}}{\text{Total number of variables}} \times 100$$

F₂ (Frequency) represents the percentage of individual tests that do not meet objectives ("failed tests")

$$F_2 = \frac{\text{Number of failed tests}}{\text{Total number of tests}} \times 100$$

F₃ (Amplitude) represents the amount by which failed test values do not meet their objectives ("failed tests"). F₃ is calculated in three steps-

- 1) The number of times by which an individual concentration is greater than (or less than, when the objective is a minimum) the objective is termed as excursion and is expressed as follows. When the test value must not exceed the objectives-

$$\text{Excursion}_i = \frac{\text{Failed test value}_i}{\text{Objectives}_j} - 1$$

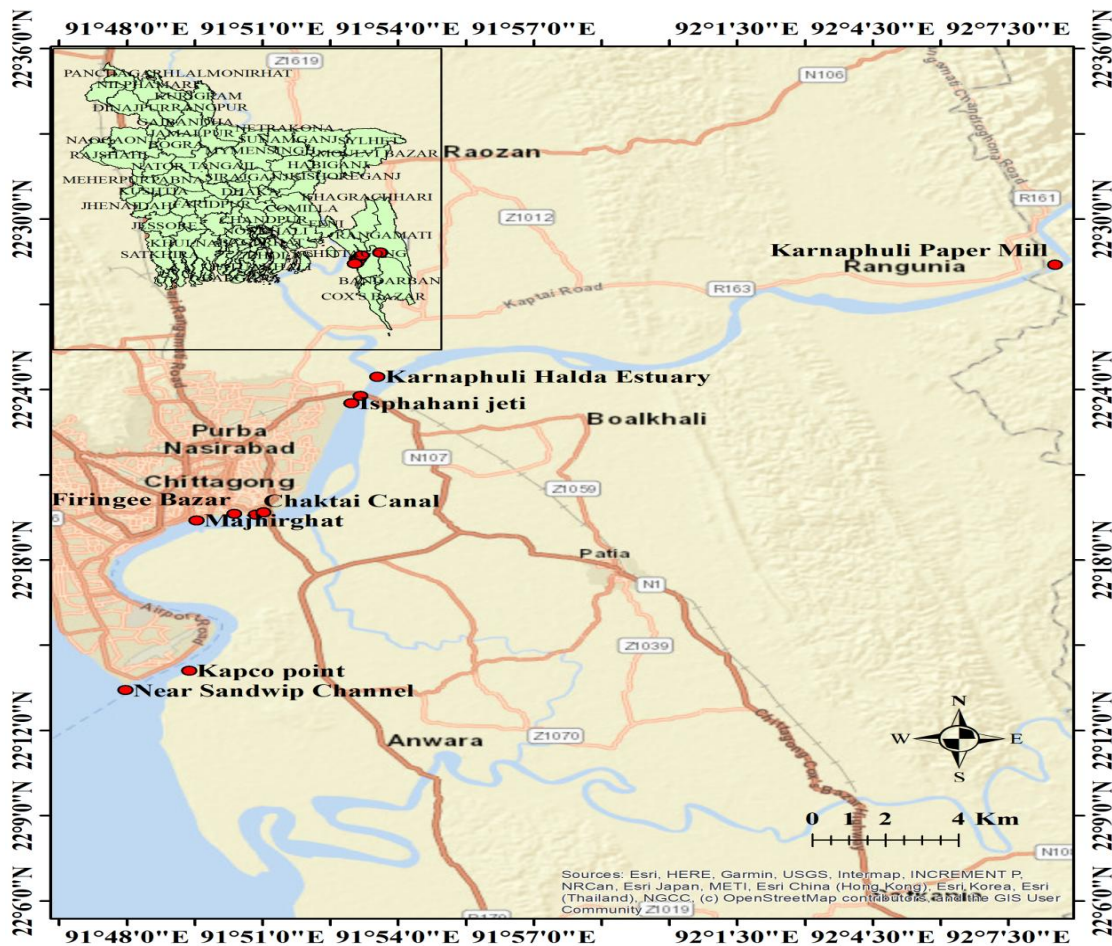


Fig. 1. GPS location showing sampling sites

Table 2. CCME rankings for river water [26,27]

Rank	WQI Value	Description
Excellent	95-100	Water quality is protected with a virtual absence of threat or impairment; conditions very close to natural or pristine levels; these index values can only be obtained if all measurements are within objectives all the time.
Good	80-94	Water quality is protected with only a minor degree of threat or impairment; conditions rarely depart from natural or desirable levels.
Fair	65-79	Water quality is usually protected but occasionally threatened or impaired; conditions sometimes depart from natural or desirable levels.
Marginal	45-64	Water quality is frequently threatened or impaired; conditions often depart from natural or desirable levels.
Poor	0-44	Water quality is almost always threatened or impaired; conditions usually depart from natural or desirable levels.

2) The amount by which individual tests are out of compliance is calculated by summing the excursions of individual tests from their objectives and dividing by the total number of tests. This variable, referred to as the normalized sum of excursion, or nse, is calculated as-

$$nse = \frac{\sum_{i=1}^n \text{Excursions}}{\text{No. of tests}}$$

3) F_3 is then calculated by an asymptotic function that scales the normalized sum of the excursions from objectives (nse) to yield a range between 0 to 100.

$$F_3 = \frac{nse}{0.01nse + 0.01}$$

Once the factors have been obtained, the index itself can be calculated by following equation.

$$CCMEWQI = 100 - \frac{\sqrt{F_1^2 + F_2^2 + F_3^2}}{1.732}$$

The divisor 1.732 normalizes the resultant values to a range of 0 to 100, where 0 represents the “worst” water quality and 100 represent the “best” water quality. Once the CCME WQI value has been determined, water quality is ranked by relating it to one of the following categories [24,25].

3. RESULTS AND DISCUSSION

Laboratory analysis for different water quality parameters of Karnaphuli river water was performed according to standard methods. The test results varied in different sample points and also varied due to seasonal variation. pH is one

of the important indicators of surface water quality. pH values vary between 6.4 and 7.8. Water from all the locations was not acceptable to drink throughout the period of the study. DO is the most important factor to support aquatic life as well as to assess the water quality. DO values vary between 1.8 and 6 ppm. Most of the locations have lower DO value than the standard value which indicates the water contains organic pollutants as well as chemicals that reduces DO value and increase BOD value.

TDS and Electrical Conductivity ranges between 94-390 ppm and 184-778 μS/cm. The main sources of TDS and EC are agricultural waste, domestic and municipal waste, runoff etc. The industrial wastes may also increase these parameters. Turbidity is also high due to high TDS.

Acceptable values of Alkalinity (34-123 ppm) and total hardness (74-177.8 ppm) were measured.

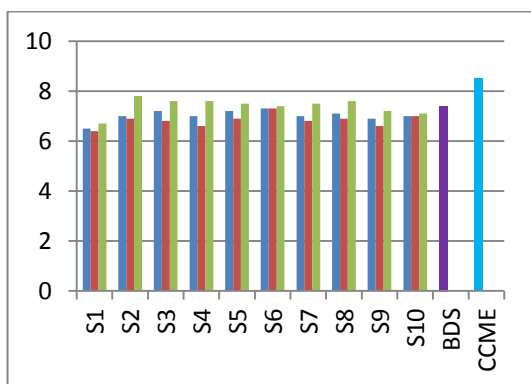


Fig. 2. Seasonal variation of pH

(Pre-Monsoon, Monsoon, Post-Monsoon, Bangladesh Standards (BDS), CCME)

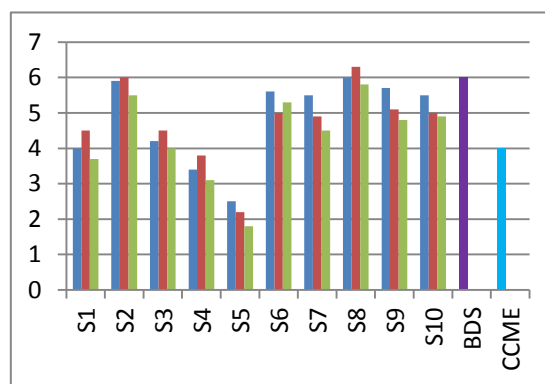


Fig. 3. Seasonal variation of DO (ppm)

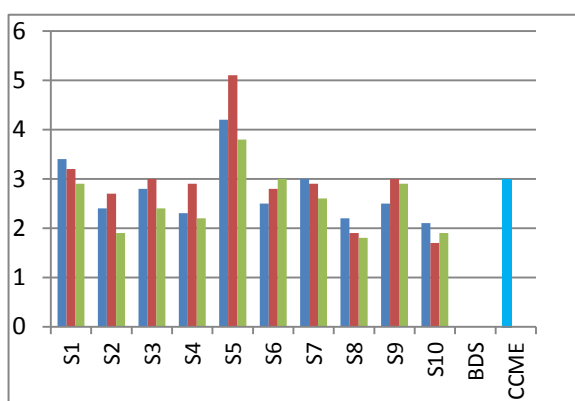


Fig. 4. Seasonal variation of BOD (ppm)

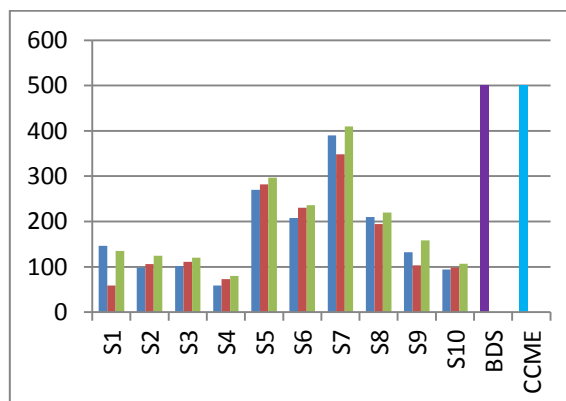


Fig. 5. Seasonal variation of TDS (ppm)

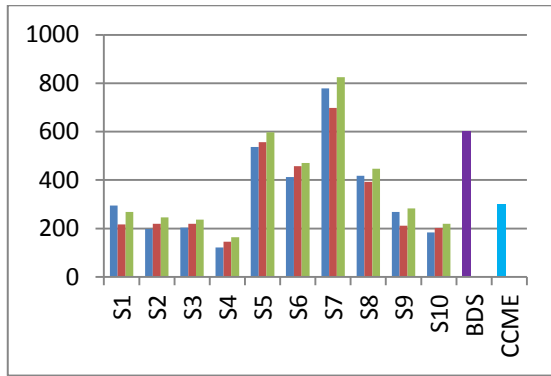


Fig. 6. Seasonal variation of EC ($\mu\text{S}/\text{cm}$)

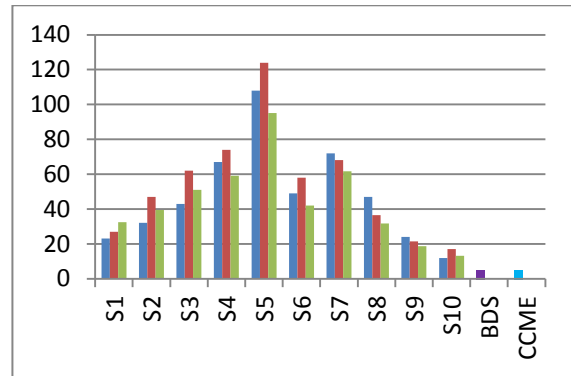


Fig. 7. Seasonal variation of Turbidity (NTU)

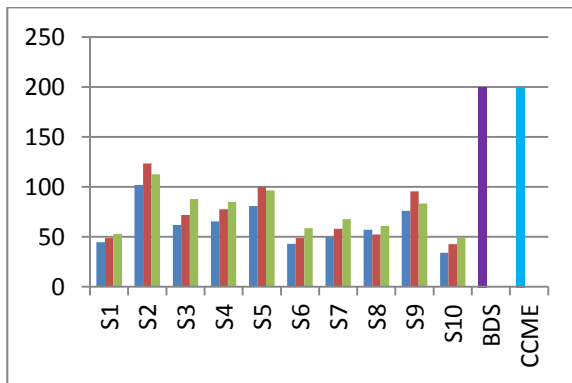


Fig. 8. Seasonal variation of alkalinity (ppm)

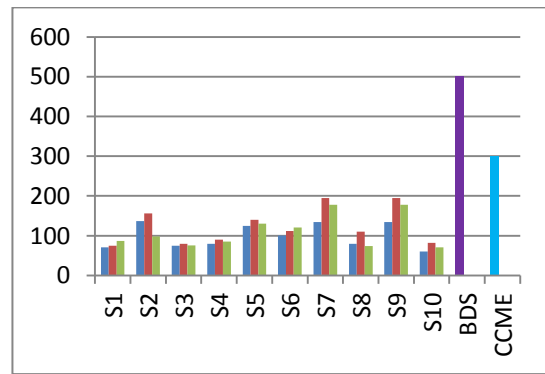


Fig. 9. Seasonal variation of total hardness (ppm)

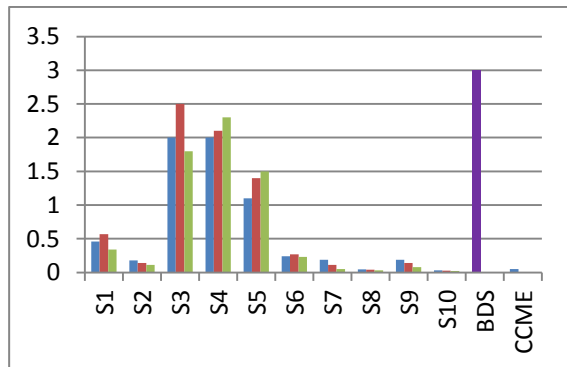


Fig. 10. Seasonal variation of phosphate (ppm)

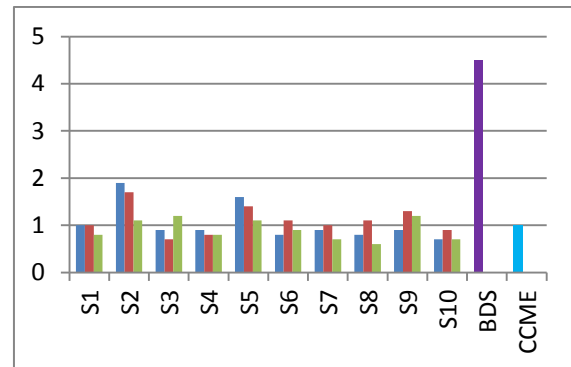


Fig. 11. Seasonal variation of nitrate (ppm)

Almost all the sample points have higher Phosphate value than the standard which ranges from 0.03-2.5 ppm. Nitrate values (0.4-1.9 ppm) were within the standard except some points. Nitrates and phosphates come from fertilizer industries, municipal wastes, sewage, drainages etc.

Heavy metals (Cu, Cd, Pb and Zn) were detected to exceed the standard value in all the sample location except Zn. The concentrations

of Cu, Cd, Pb and Zn are Cu- 0.108-0.743ppm, Cd- 0.073-0.281 ppm, Pb- /0.017-0.699 ppm, Zn- 0.012-0.032 ppm respectively. The main sources of heavy metals are untreated waste water from industries.

Chloride values ranges from 3.8-50 ppm and all the values were in acceptable range. Some sample points (S1, S2, S5, S6, S7) have high chloride values due to sea water intrusion, while the other sample points have low chloride values.

The WQI value is an indicator to identify the standard of water quality of surface or ground water and CCME-WQI method is used when seasonal variation is included [28-30]. Based on CCME-WQI model, WQI value for Karnaphuli River is found from 23.2 to 59.3 which indicate that water quality of this river is poor or marginal. The low level of WQI of Karnaphuli River is calculated by 15 numbers of variables. Applying the CCME equations on the results of water

analysis, water quality of the different sampling points are determined. However, this method is used to assess the water quality for large scale calculations while this study is conducted on a limited scale in some selected points of Karnaphuli river basin. According to the range of CCME-WQI value given in Table 3, water quality of this river is threatened or impaired; conditions usually depart from natural or desirable levels [31,32].

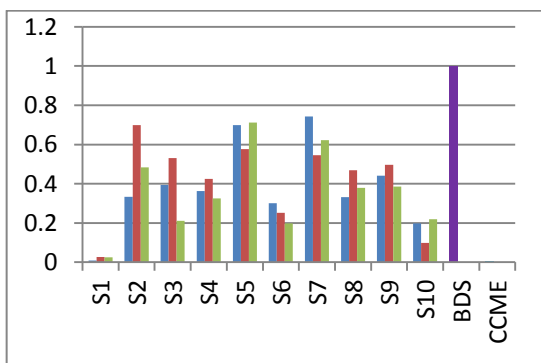


Fig. 12. Seasonal variation of Cu (ppm)

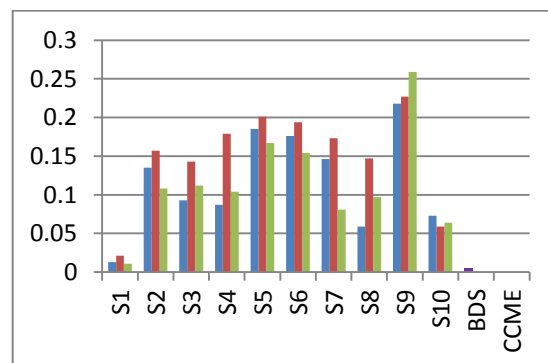


Fig. 13. Seasonal variation of Cd (ppm)

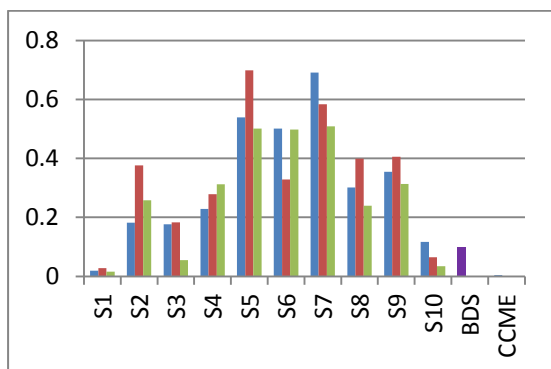


Fig. 14. Seasonal variation of Pb (ppm)

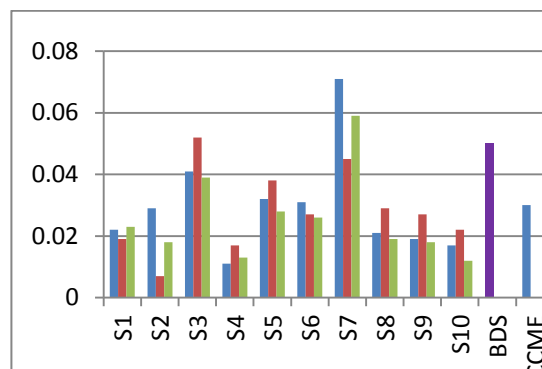


Fig. 15. Seasonal variation of Zn (ppm)

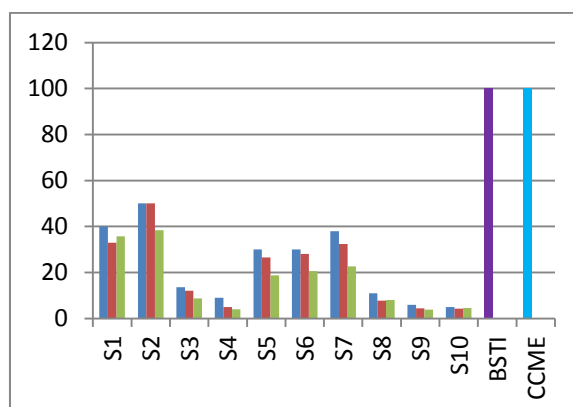


Fig. 16. Seasonal variation of chloride (ppm)

Table 3. CCME-WQI value and rankings of Karnaphuli river basin

Sample Point	CCME WQI	Category
Near Sandwip Channel	59.3	Marginal
KAFCO Point	37.9	Poor
Firingibazar ghat Point	37.5	Poor
Majhir ghat Point	38.8	Poor
Chaktai Canal Point	23.2	Poor
Rajakhali Canal Point	29.8	Poor
Ispahani Jetty Point	33.1	Poor
Kalurghat Point (Near BSCIC)	37.5	Poor
Karnaphuli Paper Mill Point	36.3	Poor
Karnaphuli Halda Estuary	45.5	Marginal

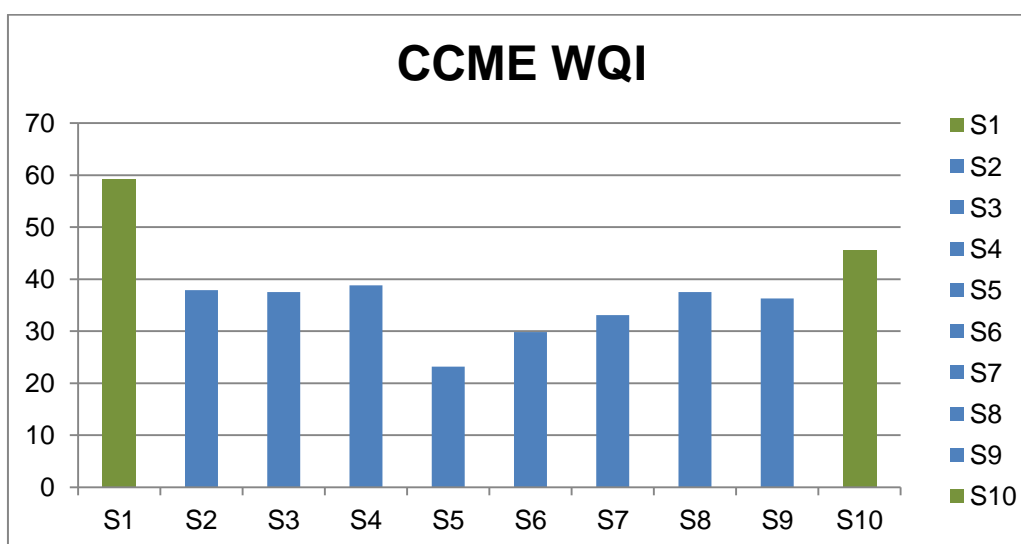


Fig. 17. CCME-WQI values
(■ Marginal ■ Poor)

4. CONCLUSION

The WQI values indicate that the sample point 1 and 10 are less polluted but also near the marginal line of pollution. Other sample points are more polluted due to the industrial discharge, falling canals, municipal garbage, runoff etc. Untreated industrial wastes are the reason behind the high heavy metal content, municipal garbage increases the BOD value, fertilizers and nutrients used in agricultural fields increases the nitrate and phosphate value. Most of the the water quality parameters exceeds the standard value given by CCME, so the river water is non-conducive for human use and aquatic life. As most of the sample points are below marginal line, the quality of this river water is not acceptable for drinking purpose and not good for irrigation and industrial purpose also. As the water is widely used for irrigation, and in industries the pollution should be minimized by identifying the pollution sources.

COMPETING INTERESTS

Authors have declared that no competing interests exist.

REFERENCES

1. N'Diaye AD, Ould Si M, Kanko AO. Seasonal variation of the water quality of the Senegal river (Mauritania)". International Journal of Chemical and Process Engineering. 2014:1-9.
2. Patra AK, Sumon Sengupta, Tanma Dutta. Physicochemical properties and ichthy of Auna diversity Karala river, A tributary of teesta river at Jalpaiguri district of Westbengal, India. International Journal of Applied biology and Pharmaceutical Technology. 2011;2(3):47-58.
3. Rahman A, Zafor MA, Rahman M. Surface water Quality and risk assessment in the

- vicinity of Sylhet city. International Journal of Water resources and Environmental Engineering, 2013;5(1):29-34.
4. Jamaluddin Ahmed M, Anisul Islam M, Edris Ali M. Physicochemical assessment of water quality of the Karnafuli river and its impact on the environment of Chittagong, Bangladesh. North American Academic Research, 2020;3:110-152.
 5. List of pollution industries. Available:<http://business.webindia.com/Plutte.pdf>.20111
 6. Ewaid SH, Abed SA. Water quality index for Al-Gharraf river Southern Iraq. Egyptian Journal of Aquatic Research; 2017.
 7. Singh KP, Malik A, Mohan D, Sinha S. Multivariate statistical techniques for the evaluation of spatial and temporal variations in water quality of Gomti river (India)-a case study. Water Resources. 2004;3980-3992.
 8. Singh KP, Malik A, Sinha S. Estimation of source of heavy metal contamination in Sediments of Gomti river(India) using principal component analysis. Anal Chim Acta. 2005;538:355-374.
 9. Wang X, Auler AS, Edwards RL, Cheng H, Ito E, Wang Y, Kong X, Solheid M. Millennial-scale precipitation changes in Southern Brazil over the past 90,000 years, Geophys. Res. Lett. 2007;GL031149.
 10. May AM, Mutasem E, Mark DS, John NL. Assessment of river water quality in Pearl River Delta using multivariate statistical techniques. Sci Total Environ. 2006;362:15-30.
 11. Al-Janabi ZZ, Kubaisi AR, Jwad AM. Assessment of water quality of Tigris river by using water quality index (CCME -WQI). Journal of Al-Nahrain University. 2012;15(1):119-126.
 12. Terrado M, Barceló D, Tauler R, Borrell E, de Campos S. Surface-water-quality indices for the analysis of data generated by automated sampling networks. TrAC Trends in Analytical Chemistry. 2010 Jan 1;29(1):40-52.
 13. Samantray P, Mishra BK, Panda CR, Rout SP. Assessment of water quality index in Mahanadi and Atharabanki rivers and Taldanda Canal in Paradip area, India. Journal of Human Ecology; 26(3):153-161.
 14. Tyagi S, Sharma B, Singh P, Dobhal R. Water quality assessment in terms of water quality index. M.J. Water Resource. 2013;1(3):34-38.
 15. Patil BS, Giriappanavar RR. Application of CCME WQI in assessing water quality for Fort lake of Belgium, Karnataka. Indian journal of Applied Research. 2013;03:32-33.
 16. Sharma D, Arun Kanshal. Water quality analysis of river Yamuna using water quality index in the national capital territory. Appl Water Sci. 2011;1(3-4):147-157.
 17. Khan AA, Annette T, Paterson R, Haseen K, Richard W. Procedures for deriving site specific water quality guidelines for the CCME water quality index. Water Quality Research Journal Canada, 2005;40(4):448-456.
 18. Ali MM, Ali ML, Islam MS, Rahman MZ. Preliminary assessment of heavy metals in water and sediment of Karnaphuli River. Environmental Nanotechnology Monitoring & Management. 2016;5:27-35.
 19. Mahmudul Karim, Sujan Kanti Das, Shujit Chandra Paul, Mohammad Farhan Islam, Md. Shahadat Hossain. Water quality assessment of Karnaphuli river, Bangladesh using multivariate analysis and pollution indices. Asian Journal of Environment and Ecology. 2018;7(3):1-11.
 20. APHA standard methods for the examination of water and waste water; 2012.
 21. Yahaya A, Adegbe AA, Emurotu JE. Assessment of heavy metal content in the surface water of Oka-Afa canal Isolo Lagos. Archives of Applied Science Research. 2012;4(6):2322-2326.
 22. Standard Methods For the examination of water and waste water. New York- 10019 : APHA (American Public Health Association). 2005:1200.
 23. Momodu MA, Anyakora CA. Heavy metal contamination of ground water: The surulere case study. Environmental and Earth Sciences Research Journal. 2010;29(1):39-43.
 24. Bilgin, Ayla. Evaluation of surface water quality by using Canadian Council of Ministers of the Environment Water Quality Index method and discriminant analysis method: a case study Coruh River Basin. Springer Nature Swizerland. 2018;20.
 25. Amir Ali Khan, Annette Tobin, Renée Paterson, Haseen Khan, Richard Warren. Application of CCME procedures for deriving site-specific water quality guidelines for the CCME water quality

- index. Water Quality Research Journal Canada. 2005;40:448-456.
26. Canadian environmental quality guidelines. Canadian Council of Minister of the Environment; 2017.
27. Ashok lumb, Dough Halliwell, Tribeni Sharma. Application of CCME WQI to monitor water quality: A case study of the Mackenzi river basin, Canada. Springer. 2016;113:411-419.
28. Khanna DR, Bhutiani R, Bharti Tyagi, Tyagi PK, Mukesh Ruhela. Determination of water quality index for the evaluation of surface water quality for drinking purpose. International Journal of Science and Engineering. 2013;1(1):9-11.
29. Singh SK, Deepika. Water quality index assessment of Bhalswa lake, New Delh. International Journal of Advanced Research. 2015;3(5):1052-1059.
30. Santhosh B. Singh NP. Guidelines for water quality management for fish culture in Tripura. Publication No. 27. ICAR Research Complex for NEH Region, Tripura Centre, Lembucherra, West Tripura. 2007:10.
31. Kannel PR, Lee S, Lee YS, Kanel SR, Khan SP. Application of water quality indices and dissolved oxygen as indicators for river water classification and urban impact assessment., Springer Science, Environmental Monitoring and Assessment. 2007;132.
32. Puri PJ, Yenkie MKN, Sangal SP, Gandhare NV, Sarote GB, Dhanorkar DB. Surface water (lakes) quality assessment in Nagpur city (India) based on water quality index (WQI). Rasayan Journal. 2011;4(1):43-48.

© 2023 Mukut et al.; This is an Open Access article distributed under the terms of the Creative Commons Attribution License (<http://creativecommons.org/licenses/by/4.0>), which permits unrestricted use, distribution, and reproduction in any medium, provided the original work is properly cited.

Peer-review history:

The peer review history for this paper can be accessed here:
<https://www.sdiarticle5.com/review-history/95353>