



## **Effect of Gibberellic Acid and Naphthalene Acetic Acid on Growth and Yield of Cucumber (*Cucumis sativus* L.) in Prayagraj Agro Climatic Conditions**

**Paluru Thejaswi <sup>aω\*</sup>, Deepanshu <sup>a#</sup> and Vijay Bahadur <sup>at</sup>**

<sup>a</sup> *Department of Horticulture, Naini Agriculture Institute, Sam Higginbottom University of Agriculture, Technology and Sciences, Prayagraj – 211007, (U.P.), India.*

### **Authors' contributions**

*This work was carried out in collaboration among all authors. All authors read and approved the final manuscript.*

### **Article Information**

DOI: 10.9734/IJPSS/2022/v34i2031224

### **Open Peer Review History:**

This journal follows the Advanced Open Peer Review policy. Identity of the Reviewers, Editor(s) and additional Reviewers, peer review comments, different versions of the manuscript, comments of the editors, etc are available here: <https://www.sdiarticle5.com/review-history/89157>

**Original Research Article**

**Received 29 April 2022**  
**Accepted 03 July 2022**  
**Published 06 July 2022**

### **ABSTRACT**

The experiment was conducted to determine the effect of gibberellic acid and Naphthalene acetic acid on growth and yield of cucumber at Horticulture Research Field, Department of Horticulture, Naini Agricultural Institute, Sam Higginbottom University of Agriculture, Technology and Sciences, Prayagraj during mid March- mid June 2021. Total Nine treatments were tried and replicated three times in a Randomized Block Design. Treatments include two growth regulators having concentrations of GA<sub>3</sub> (15, 25, 35, 45 ppm) and NAA (75, 100, 125, 150 ppm) and Control (Water spray) were sprayed at two leaf stage and four-leaf stages. The application of plant growth regulators significantly effects the vegetative as well as reproductive attributes of the crop. The treatment T<sub>3</sub> 25 ppm GA<sub>3</sub> at 2, 4 leaf stage was found most effective among all the treatments in terms of Vine length at 20, 40, 60 days after sowing (39.12, 91.02, 180.32 cm) Days to first appearance of male flowers in 50% plants (32.86 days), Number of fruits per plant (12.20), Average fruit yield per plant (1870.37 g), fruit weight (153.33g) where as Days to first appearance of female flowers in 50% plants (38.93) and Days to first harvest (50.6) was observed in 35 ppm GA<sub>3</sub>, length of the fruit (14.66 cm in 15 ppm GA<sub>3</sub>), fruit diameter (4.28 cm in 15 ppm GA<sub>3</sub>), Average yield (18.77 t/ha in 25 ppm GA<sub>3</sub>). Based on these observations spraying of GA<sub>3</sub> 25 ppm at 2, 4 leaf stages was found effective for growth and yield of cucumber compared to other concentrations of GA<sub>3</sub>, NAA and control.

<sup>ω</sup>M. Sc Scholar;

<sup>#</sup>Assistant Professor;

<sup>t</sup>Associate Professor;

\*Corresponding author: E-mail: [thejaswipaluru@gmail.com](mailto:thejaswipaluru@gmail.com);

**Keywords:** *Cucumber*;  $GA_3$ ; NAA; growth; yield.

## 1. INTRODUCTION

Cucumber (*Cucumis sativus* L.) belongs to the family Cucurbitaceae with monoecious nature having  $2n=14$  as chromosome number is an important warm season vegetable crop [1]. It is cross pollinated and propagated by seed. *Cucumis hardwickii* is progenitor of present cultivating cucumber. The fruit of cucumber is said to have cooling effect, prevent constipation and check jaundice and indigestion [2]. During 2020- 2021 according to (DAC & FW) cucumber was cultivated about an area 0.109 million ha with annual production of 1.665 million tonnes (Anonymous). In cucumber staminate flowers are much more than pistillate flowers so application of optimum concentration of plant growth regulators at correct stage of crop growth modifies the morphology and physiology of plant by inhibiting or stimulating the alpha amylase enzyme which regulate the metabolism of plants in altering the sequence of flowering. Plant growth regulators can be used flexibly for the fine tuning of crops that grow uncontrollable and unpredictable environmental conditions [3].  $GA_3$  and NAA are the two important plant growth regulators that alter the growth and yield contributing characters of cucumber. Exogenous application of  $GA_3$  at three leaf stage and tendril initiation stage helps in enhancing vine length, branches, promoting and better fruit setting while NAA which is a synthetic form of auxin helps in enhancement in vegetative growth, fruit and seed yield [4]. Sex expression and sex ratio in cucumber was affected by different growth regulators [5]. Inadequate data was observed on application of plant growth regulators on growth and yield of cucumber. Therefore an experiment was conducted to determine the best concentration of gibberellic acid and naphthalene acetic acid on growth and yield of cucumber.

## 2. MATERIALS AND METHODS

The field experiment was conducted at Horticulture Research Field, Department of Horticulture, Naini Agricultural Institute, Sam Higginbottom University of Agriculture, Technology and Sciences, Prayagraj during mid-March 2021. The University is about 7 km away from Prayagraj city and it is geographically situated at  $25.5^{\circ}$  N latitude,  $81.08^{\circ}$  E longitudes. The altitude of this location is about 98 meter above the mean sea level. The soil of the

experimental field was sandy loam with pH of 6.8.

Recommended package of cultural practices were adopted at last ploughing FYM-  $2.0 \text{ kg/m}^2$  and half dose of nitrogen, full dose of  $P_2O_5$  and  $K_2O$  were applied as basal and the remaining half dose of nitrogen was applied at 30 days after sowing  $100:60:60 \text{ kg/ha}$  in the form of Urea, Single super phosphate and Muriate of potash.

The field experiment was carried out as a randomized block design with three replications. Two seeds per pit were sown with a spacing of  $1.5 \times 0.6 \text{ m}$  in march 2021. Plot size is  $2 \times 2 \text{ m}^2$ .  $GA_3$  (15, 25, 35, 45 ppm) and NAA (75, 100, 125, 150 ppm) solutions, control- water spray were prepared from the respective stock solutions with distilled water. The solutions were sprayed at 2 and 4 leaf stage with hand sprayer early in the morning. Irrigation, weeding, hoeing and plant protection measures were employed as per the need of the crop. For each treatment of a replication five plants were selected and observations were recorded on various parameters of growth and yield of the crop as per the planned schedule. The recorded data was analyzed statistically by ANOVA.

$GA_3$  - Gibberellic acid; NAA- Naphthalene acetic acid; PGR- Plant growth regulators.

## 3. RESULTS AND DISCUSSION

### 3.1 Germination Parameters

The seeds were germinated in 4-5 days after sowing among all the treatments including control. The experimental results revealed that there is no significant difference with respect to days taken to germination because the seeds were not treated with the gibberellic acid and naphthalene acetic acid. It can be affected by various environmental factors such as the difference between day and night temperature, soil moisture, light, pH of the soil in cucumber. The statistically analysed data pertaining to days to germination was presented in Table 1.

### 3.2 Growth Parameters

The statistical data on growth parameters in different treatments was recorded (Table 1) In the experiment the results revealed that the vine length was increased significantly with the

application of GA<sub>3</sub> 25 ppm (39.12, 91.02, 180.32 cm) which was at par with GA<sub>3</sub> 15 ppm (34.9, 89.76, 178.84 cm) followed by NAA 75 ppm (35.03, 86.16, 176.72 cm) while minimum was recorded in control (29.8, 73.21, 162.5 cm) at 20, 40, 60 days after sowing (Fig. 1). The data indicated in Table no 1 shows that application of plant growth regulators significantly reduces days taken to first appearance of male flowers in 50% plants which was recorded in T<sub>3</sub> GA<sub>3</sub> 25 ppm (32.86 days) and it was at par with T<sub>2</sub> GA<sub>3</sub> 15ppm (33.4 days) where as maximum days was recorded in control-water spray (39 days). This might be due to reducing the sugars there by inducing metabolic activity of cell which induces early flowering [6]. Minimum days to first appearance of female flowers in 50% plants were recorded in T<sub>4</sub> GA<sub>3</sub> 35 ppm (38.93 days) which was at par with T<sub>3</sub> GA<sub>3</sub> 25 ppm (39.9 days) where as maximum days was recorded under control-water spray (46.2 days) (Fig. 2). This might be due to effect of GA<sub>3</sub> which alters the sexual differentiation in potentially male buds to female buds that enhances female flower formation earlier. Mahala et al., [7] revealed that application of growth regulators (NAA, Ethrel, CCC) has significant effect on vegetative growth as well as reproductive attributes. Chovatia et al., [8]; Sure et al., [9] showed that spraying of gibberellic acid at 25 ppm reduced the days to flowering in

pumpkin. GA<sub>3</sub> enhances more cell division, cell wall elongation, cell wall plasticity and permeability of cell membranes, induced parthenocarpy and modify yield contributing characters of plant [10]. GA<sub>3</sub> increases the rate of photosynthesis, efficiency of utilization of photosynthates which results in rapid cell elongation and cell division, stimulates RNA and protein synthesis which ensures in increasing the vine length. Acharya et al., [11] observed that days to first appearance of male flowers in cucumber were significantly influenced by the GA<sub>3</sub> 50-100 ppm as compared to control. The similar results of the study were also observed by Rahman et al., [12] in cucumber; Dixit et al., [13] in watermelon. The statistically analysed data pertaining to growth parameters was presented in Table 1.

### 3.3 Yield Parameters

In the study the exogenous application of gibberellic acid and naphthalene acetic acid at 2, 4 leaf stages shows significant difference on yield parameters as compared to control which was shown in Table 2. The results obtained in the present study shows that minimum days taken to first harvest of cucumber was recorded in T<sub>4</sub> GA<sub>3</sub> 35 ppm (49.8 days) which was at par

**Table 1. Effect of gibberellic acid and naphthalene acetic acid on days to germination and growth parameters of cucumber (*Cucumis sativus* L.)**

Notation	Treatment	Days to germination	Vine length (cm)			Days to 1 <sup>st</sup> appearance of male Flowers in 50% plants	Days to 1 <sup>st</sup> appearance of female flowers in 50% plants
			20 DAS	40 DAS	60 DAS		
T <sub>1</sub>	Control	4	29.89	73.21	162.75	39.93	46.26
T <sub>2</sub>	GA <sub>3</sub> 15 ppm	5	34.96	89.76	178.84	33.40	41.06
T <sub>3</sub>	GA <sub>3</sub> 25 ppm	4	39.12	91.02	180.32	32.86	39.93
T <sub>4</sub>	GA <sub>3</sub> 35 ppm	5	33.02	82.31	172.79	34.13	38.93
T <sub>5</sub>	GA <sub>3</sub> 45 ppm	5	32.48	79.88	170.16	36.05	44.86
T <sub>6</sub>	NAA 75 ppm	4	35.03	86.16	176.72	37.06	45.80
T <sub>7</sub>	NAA100 ppm	5	34.14	85.13	175.94	33.86	42.13
T <sub>8</sub>	NAA125 ppm	5	33.28	84.15	173.79	35.26	43.73
T <sub>9</sub>	NAA150 ppm	4	30.79	77.80	166.75	44.33	44.33
F-Test		NS	S	S	S	S	S
SE(d) ±		0.150	0.812	1.231	1.072	0.285	0.579
CD <sub>0.05</sub>		-	1.735	2.631	2.292	0.608	1.238

S - Significant; NS - Non significant;  
DAS - Days after sowing

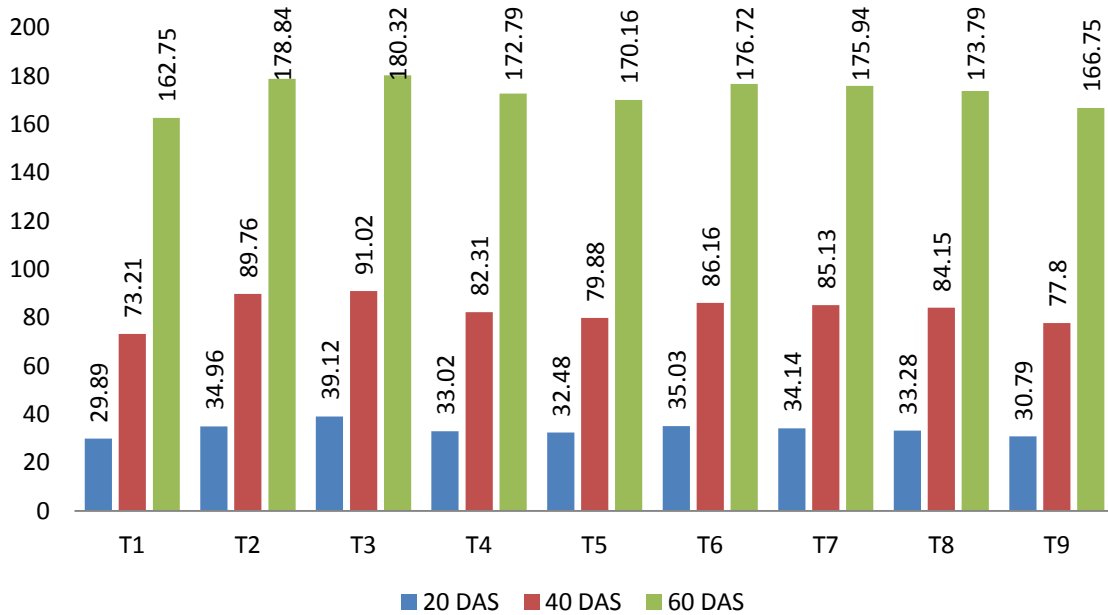


Fig. 1. Effect of Gibberellic acid and Naphthalene acetic acid on vine length of cucumber

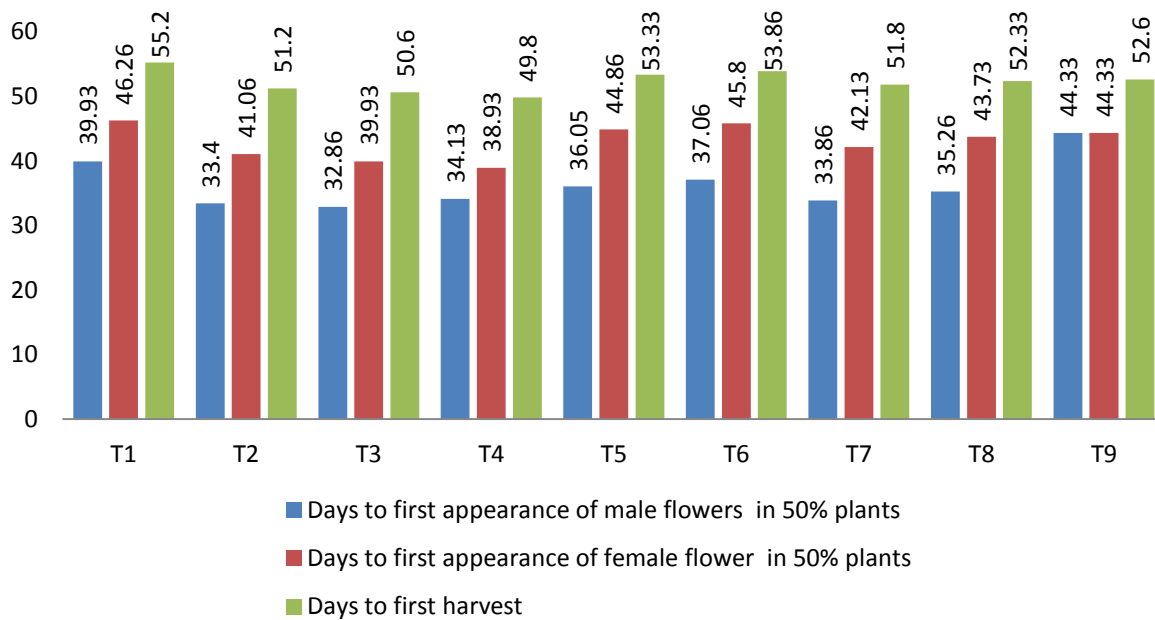


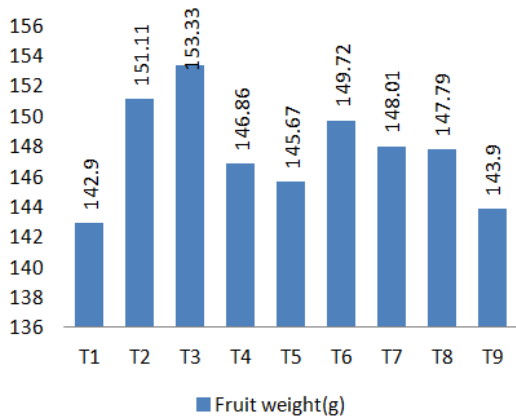
Fig. 2. Effect of Gibberellic acid and Naphthalene acetic acid on Days to first appearance of male and female flowers in 50% plants and Days to first harvest of cucumber

with T<sub>3</sub> GA<sub>3</sub> 25 ppm (50.60 days), followed by T<sub>7</sub> NAA 100 ppm (51.80) where as the maximum days taken to first harvest was recorded control-water spray (55.2 days) Fig. 2. The treated plants are more physiologically active translocates food to develop fruits which results in early maturity of fruits. The maximum fruit weight (153.33g) was recorded in T<sub>3</sub> GA<sub>3</sub> 25 ppm followed by T<sub>2</sub> GA<sub>3</sub> 15 ppm (151.11g) where as minimum was recorded

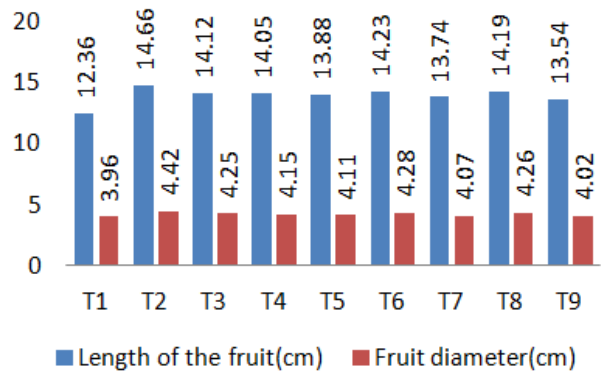
in control-water spray (142.90 g) shown in Fig. 3. GA<sub>3</sub> and NAA application increases the fruit mesocarp by increasing the cell size [14]. Jyoti et al., [15] revealed that GA<sub>3</sub> 25 ppm increased the fruit weight in ridge gourd. The maximum length of the fruit (14.66 cm) and the maximum diameter (4.42cm) was recorded with application of GA<sub>3</sub> 15ppm T<sub>2</sub> followed by T<sub>6</sub> NAA 75 ppm (14.23cm), (4.28 cm) and minimum was recorded

**Table 2. Effect of gibberellic acid and naphthalene acetic acid on days to first harvest and yield parameters of cucumber**

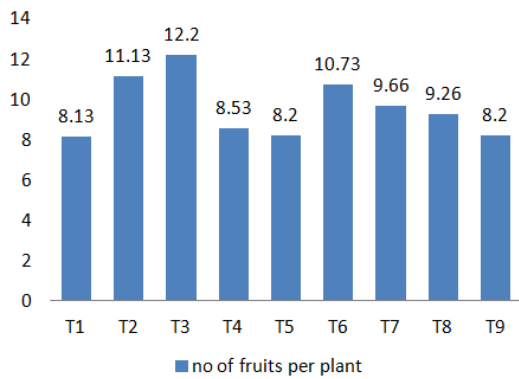
<b>Notation</b>	<b>Treatment</b>	<b>Days to first harvest</b>	<b>Fruit weight (g)</b>	<b>Length of the fruit (cm)</b>	<b>Fruit diameter(cm)</b>	<b>No of fruits per plant</b>	<b>Average yield per plant (g)</b>	<b>Average yield (t/ha)</b>
T <sub>1</sub>	Control	55.20	142.90	12.36	3.96	8.13	1,162.36	11.61
T <sub>2</sub>	GA <sub>3</sub> 15 ppm	51.20	151.11	14.66	4.42	11.13	1,682.39	16.81
T <sub>3</sub>	GA <sub>3</sub> 25 ppm	50.60	153.33	14.12	4.25	12.20	1,870.37	18.70
T <sub>4</sub>	GA <sub>3</sub> 35 ppm	49.80	146.86	14.05	4.15	8.53	1,253.14	12.53
T <sub>5</sub>	GA <sub>3</sub> 45 ppm	53.33	145.67	13.88	4.11	8.20	1,194.58	11.94
T <sub>6</sub>	NAA 75 ppm	53.86	149.72	14.23	4.28	10.73	1,606.73	16.06
T <sub>7</sub>	NAA100 ppm	51.80	148.01	13.74	4.07	9.66	1,430.71	14.30
T <sub>8</sub>	NAA125 ppm	52.33	147.79	14.19	4.26	9.26	1,369.56	13.69
T <sub>9</sub>	NAA150 ppm	52.60	143.90	13.54	4.02	8.20	1,180.03	11.79
F-TEST		S	S	S	S	S	S	S
SE(D) ±		0.513	1.217	0.184	0.037	0.190	29.083	0.291
CD <sub>0.05</sub>		1.131	2.602	0.394	0.080	0.407	62.184	2.515



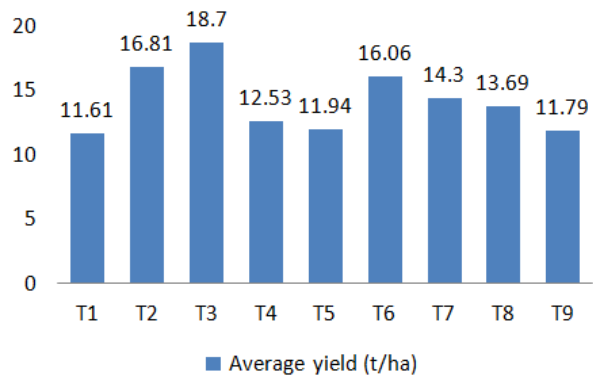
**Fig. 3. Effect of gibberellic acid and naphthalene acetic acid on fruit weight of cucumber**



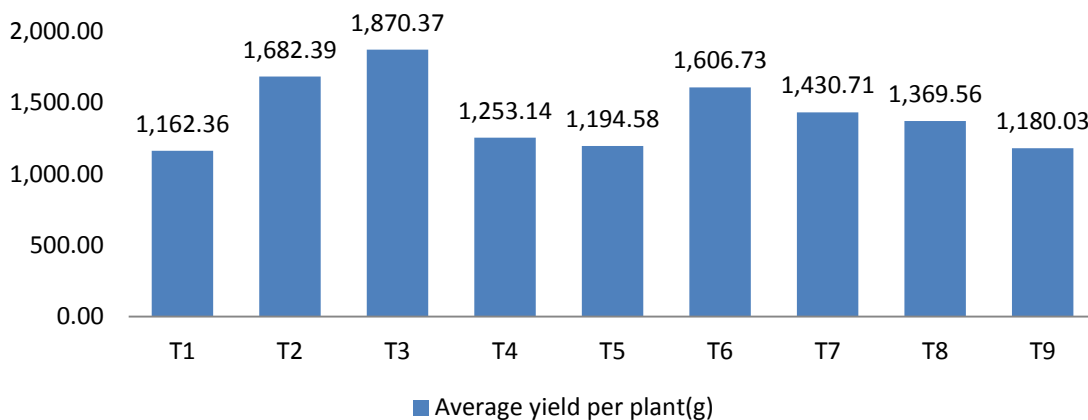
**Fig. 4. Effect of gibberellic acid and naphthalene acetic acid on length and diameter of cucumber**



**Fig. 5. Effect of gibberellic acid and naphthalene acetic acid on no of fruits per plant of cucumber**



**Fig. 6. Effect of gibberellic acid and naphthalene acetic acid on average yield of cucumber**



**Fig. 7. Effect of gibberellic acid and naphthalene acetic acid on average yield per plant of cucumber**

in control (12.36cm), (3.96cm) respectively which was shown in Fig. 4. This may be due to increasing the accumulation of carbohydrates and translocation of food towards fruit. The results

are similar with [6] showed that increasing length and diameter of the cucumber by spraying GA<sub>3</sub> 100 ppm. The maximum number of Fruits per plant (12.2), Average yield per plant (1870.378 g)

and Average yield tonnes per hectare (18.70 t/ha) was recorded in GA<sub>3</sub> 25 ppm where as minimum (8.13, 1162.3 g, 11.61 t/ha) was recorded in control-water spray respectively which was graphically shown Figs. 5-7. The Yield which depends on multiple factors like number of fruits per plant, fruit weight, length and diameter of the fruits. GA<sub>3</sub> has an effect on both vegetative as well as reproductive characters, mainly female flower formation and fruit setting which ultimately increases the number of fruits, fruit weight both combinedly increased fruit yield per plant resulted in maximum Average yield per hectare. This may be due to better enzymatic activity and the synthesis of growth regulators endogenously which was similar findings of Sure et al., [9] in pumpkin. Shirzad et al. [16] reported that application of GA<sub>3</sub> 60 ppm increased the number of fruits per plant and yield in bittergourd. These findings were similar with [17] in cucumber, Dalai et al., [18] in cucumber [19-21].

#### 4. CONCLUSION

It was concluded that the effect of gibberellic acid and naphthalene acetic acid on growth and yield of cucumber at 2, 4 leaf stage was found superior in T<sub>3</sub> - GA<sub>3</sub> 25 ppm in terms of Vine length, Days to first appearance of female flowers in 50% plants, Days to first appearance of male flowers in 50% plants, Days to first Harvest, Fruit weight in grams (g), Length of the fruit (cm), Fruit diameter (cm), Number of Fruits per plant, Average Yield per plant (g), Average Yield (t/ha) as compared to other doses of GA<sub>3</sub>, NAA and control.

#### ACKNOWLEDGEMENTS

Success is the manifestation of diligence, perseverance, inspiration, motivation and innovations It is my proud and privilege to express a deep sense of gratitude to my advisor Mr. Deepanshu, Assistant Professor, Department of Horticulture, Naini Agricultural Institute, SHUATS, Prayagraj, to the chairperson Dr. Pradeep Kumar Shukla, Assistant Professor, Department of Biological Sciences, SHUATS, Co-advisor Dr. Vijay Bahadur Associate Professor and Head, Department of Horticulture, Naini Agricultural Institute, SHUATS, and member Dr. Pratyasha Tripathi, Assistant Professor, Department of Mathematics and Statistics, SHUATS, for providing help in various ways and offering valuable suggestions during the course of the research work.

#### COMPETING INTERESTS

Authors have declared that no competing interests exist.

#### REFERENCES

1. Bailey LH. Manual of cultivated plants. Macmillan Company, New York. 1969;1:116.
2. Shaju, Urfi Fatmi, Devi Sing. Evaluation of different cucumber (*Cucumis sativus* L.) hybrids for their growth and yield under Prayagraj agro-climatic conditions. International Journal of Current Microbiology and Applied Sciences. 2020;9(12):1194-1201
3. Rademacher W. Chemical regulators of gibberellin status and their application in plant production. Annual Plant Reviews. 2016;49:359-403.
4. Nagamani, Sudipta B, Lal SK, Behera TK, Chakrabarty SK, Talukdar A. Effect of plant growth regulators on sex expression, fruit setting, seed yield and quality in the parental lines for hybrid seed production on bitter gourd. (*Momordica charantia* L.). Indian Journal of Agricultural Sciences. 2015;85(9):1185-1191
5. Choudhury, Phatak SC. Sex egression and sex ratio in cucumber as affected by plant regulator sprays. Indian Journal of Horticulture. 1959;16(3):162-169.
6. Kadi, Asati, KP, Barche S, Tulasigeri RG. Effect of different plant growth regulators on growth, yield and quality parameters in cucumber (*Cucumis sativus* L.) under polyhouse condition. International Journal of Current Microbiology and Applied Sciences. 2018;7(4):3339-3352.
7. Mahala, Choudhary MR, Yadav TV, Garhwaland OP, Singh P. Effect of palnt growth regulators on yield, quality and economics of bottle gourd (*Lagenaria siceraria* (Mol.) Standl.) Annals of Agri-Bio Research. 2014;19(1):137-139.
8. Chovatia RS, Ahlawat TR, Kavathia YA, Jivani LL, Kaila DC. Effect of plant growth regulators on vegetative growth, flowering and yield of bitter gourd cv. Priya. Indian Journal Horticulture. 2010;67(11):254-8.
9. Sure Arooie, Azizi M. Influence of plant growth regulators (PGRs) and planting method on growth and yield in Oil pumpkin (*Cucurbitapepo* var. *styriaca*). Notulae Scientia Biologicae. 2012;4(2).

10. Deepanshu, Pradeep Kumar Singh. Effect of plant growth regulators on quality, yield and growth of bottle gourd (*Lagenaria siceraria*) Ecology, Environment and Conservation. 2017;23(4):2206-2209
11. Acharya, Thakar C, Brahmabhatt JH, Joshi N. Effect of plant growth regulators on cucurbits. Asian Journal of Pharmacognosy and Phytochemistry. 2020;9(4):540-544.
12. Rahman MA, Sikder S, Bahadur MM, Pramanik SK. Influence of gibberellic acid on growth, flowering, and fruit yield of cucumber Journal of Science and Technology. 2018;33-42
13. Dixit A, Rai N, Kumar V. Effect of plant growth regulators on growth, earliness and sex ratio in watermelon under Chhattisgarh region. Indian Journal of Agricultural Research. 2001;35(1):66-8.
14. Akter P, Rahman MA. Effect of foliar application of IAA And GA on sex expression, yield attributes and yield of bitter gourd (*Momordica charantia* L.). Chittagong University Journal of Biological Sciences. 2010;55-62.
15. Jyoti S, Patel NB, Patel JB. Effect of growth regulators and stages of spray on seed yield and seed quality parameters of ridge gourd [*Luffa acutangula* (Roxb) L.]. Journal of Applied and Natural Science. 2016;8(3):1551-5.
16. Shirzad SU, Arooie H, Azizi M. Influence of plant growth regulators (PGRs) and planting method on growth and yield in oil pumpkin (*Cucurbita pepo* var. styriaca). Notulae Scientia Biologicae. 2012;4(2): 101-7.
17. Das RB, Rabha K, Dey SC. Effect of growth regulators on sex expression and fruit yield in cucumber (*Cucumis sativa* L.) under plastic greenhouse. Ann. Agric. Res. 2001;22(3):312-7.
18. Dalai Singh, Singh MK, Kumar KV, Malik MS, Kumar V. Effect of foliar application of GA<sub>3</sub> and NAA on growth, flowering yield and yield attributes of cucumber [*Cucumis Sativus* L.]. Annals of Horticulture. 2015;8(2):181-194.
19. Anonymous; 2020-2021. Available:<https://agricoop.nic.in/en/statistics/state-level>
20. Garg P, Dev R, Raj S, Patel VJ, Singh VK. Influence of plant growth regulators (PGRs) on growth parameters and sex ratio in cucumber (*Cucumis sativus* L.). Journal of Pharmacognosy and Phytochemistry. 2020;9(3):1658-61.
21. MR S, Helmy YI, Ahmed AA, Ghoname AA. Effect of foliar application of growth regulators (GA<sub>3</sub> and Ethereal) on growth, sex expression and yield of summer squash plants (*Cucurbita pepo* L.) under plastic house condition; 2010.

© 2022 Thejaswi et al.; This is an Open Access article distributed under the terms of the Creative Commons Attribution License (<http://creativecommons.org/licenses/by/4.0>), which permits unrestricted use, distribution, and reproduction in any medium, provided the original work is properly cited.

Peer-review history:

The peer review history for this paper can be accessed here:  
<https://www.sdiarticle5.com/review-history/89157>